



Veterinary Cancer Care, P.C.

2001 Vivigen Way

Santa Fe, NM 87505

www.vetcancercare.com

Phone: (505) 982-4492 Fax: (505) 982-1701 info@vetcancercare.com

EPHEDRA

What is Ephedra?

The herb Ephedra, known in Chinese medicine as *Ma Huang*, comes from the plant species *Ephedra sinica* and *Ephedra equisetina*.



Picture courtesy of A.P. Knight,
Colorado State University

The active ingredients in herbal Ephedra are bronchodilating alkaloids, including ephedrine, pseudoephedrine, norephedrine, and norpseudoephedrine. Bronchodilation means the opening up of the major airways in the lungs. North and Central American species of Ephedra do not contain these substances. Ephedra has been used for thousands of years in Traditional Chinese Medicine as part of the herbal therapy for the treatment of asthma, bronchitis, respiratory problems, respiratory infections, and sinus disorders. Unfortunately it has developed a bad reputation due to its abuse as an appetite suppressant. Until most products containing Ephedra were recently removed from shelves in

Canada and the United States, it was a common ingredient of many weight loss supplements.

Why recommend to administration of Ephedra to my pet?

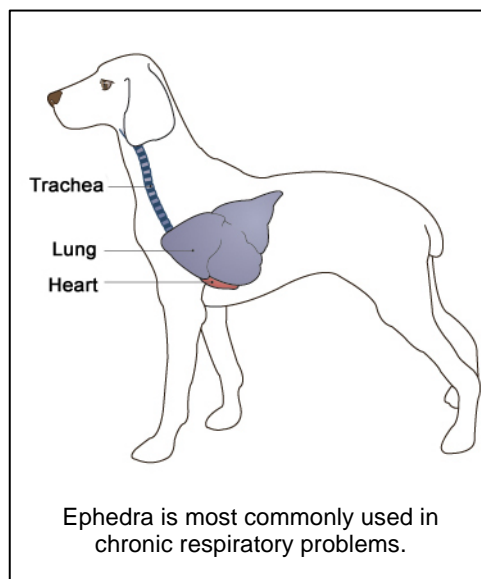
Ephedra finds use in the treatment of chronic respiratory problems, such as bronchitis, sinusitis, and most notably asthma. Ephedra is also an important constituent of some commonly used traditional Chinese herbal formulas to treat low back and joint pain.

How much experience is there with the use of Ephedra in pets?

Ephedra has been used with complete safety for many years as a component of Traditional Chinese Herbal Formulas for the treatment of pets with respiratory disease and lameness. This long track record of safety stems in part from Ephedra never being used alone, but always with herbs that either reduce its side effects or synergistically enhance its action, such that only a small amount of Ephedra is needed.

What species of animals are being treated regularly with Ephedra ?

Mainly dogs and cats are treated with this herb.



How much research has been conducted on this supplement?

Widespread clinical research confirms the effectiveness of Ephedra in people. Not surprisingly, it appears to act in a similar way in small animals.

How can my pet benefit from Ephedra?

By relieving congestion (decongestant) and dilating airways (bronchodilator,) the herb is often used to help pets with respiratory conditions. It is often used in formulas to treat lameness and back pain in weak animals, although the chemical basis for an effect in these patients is not known.

How successful is Ephedra?

This depends upon the severity of the disease, but in general pets responding to conventional drugs used to reduce congestion and dilate the airways would be expected to respond to Ephedra.

How safe is Ephedra?

When used properly under medical supervision, Ephedra is relatively safe but has the potential for side effects. Common side effects include elevated blood pressure, elevated heart rate, restlessness, insomnia, and anxiety. In people, deaths have been associated with the misuse of dietary and bodybuilding supplements containing Ephedra. However, according to Chinese tradition, this constitutes an inappropriate use of Ephedra. Some veterinarians prefer not to use Ephedra due to the potential for side effects. Since it has similar actions to many drugs (ephedrine, pseudoephedrine, aminophylline, theophylline) Ephedra should not be used in combination with these medications. It should not be used in pets with any of the following disorders: anxiety and restlessness, high blood pressure, glaucoma, impaired circulation of the brain, pheochromocytoma, and hyperthyroidism. The risk of adverse side effects from Ephedra seems exceptionally low, when it is included as a small component of an appropriately prescribed Chinese herbal formula.

Where do I obtain Ephedra and do I need a prescription?

Your veterinarian may have preferred supplements that he or she will recommend. Pet owners are cautioned against buying supplements without knowledge of the manufacturer, as supplements are not highly regulated and some products may not contain the labelled amount of ingredients. A prescription will probably be required in the very near future for Ephedra, as availability over-the-counter is likely to become very limited following regulatory review currently taking place.

*This client information sheet is based on material written by Steve Marsden, DVM ND MSOM LAc DipICH AHG, Shawn Messonnier, DVM and Cheryl Yuill, DVM, MSc, CVH.
© Copyright 2004 Lifelearn Inc. Used with permission under license. December 19, 2008.*